



**CARGO**

# CARGO

If you have lived in Sydney for frankly any time at all, you should be familiar with King Street Wharf mainstay Cargo. With a funky metropolitan buzz and a palette of concrete, timber and pops of royal blue. Combined with its prime real estate overlooking Darling Harbour, Cargo is the perfect place to get your party started or keep it going!

52-60 The Promenade, Sydney NSW 2000  
(02) 8322 2005

[info@cargobar.com.au](mailto:info@cargobar.com.au)  
[cargobar.com.au](http://cargobar.com.au)



@cargobar



## BEER GARDEN SECTION

Cocktail | Up to 100

This flexible space can be roped off for your exclusive use depending on the size of your event. With views across the entire venue and King Street Wharf, your guests can enjoy a waterside experience within the lush greenery of this iconic space.

## DOWNSTAIRS EXCLUSIVE

Cocktail | Up to 850

Providing a great backdrop with spectacular views over Darling Harbour, Cargo downstairs can be exclusively yours for your next event. The large bar sits centrally with easy access from all points, and the spacious indoor and outdoor areas allow your guests to roam freely throughout the venue.



## COCKTAIL BAR

Cocktail | Up to 100

The cocktail bar is a great space that can be sectioned off for your event, give your guests the 'VIP' treatment. Guests can enjoy our iconic cocktail menu from our expert bartenders whilst relaxing on our comfortable high tops in an exclusive 'roped offer' atmosphere. Give your guests the cocktail experience.

## CAPTAIN'S LOUNGE

Cocktail | Up to 50

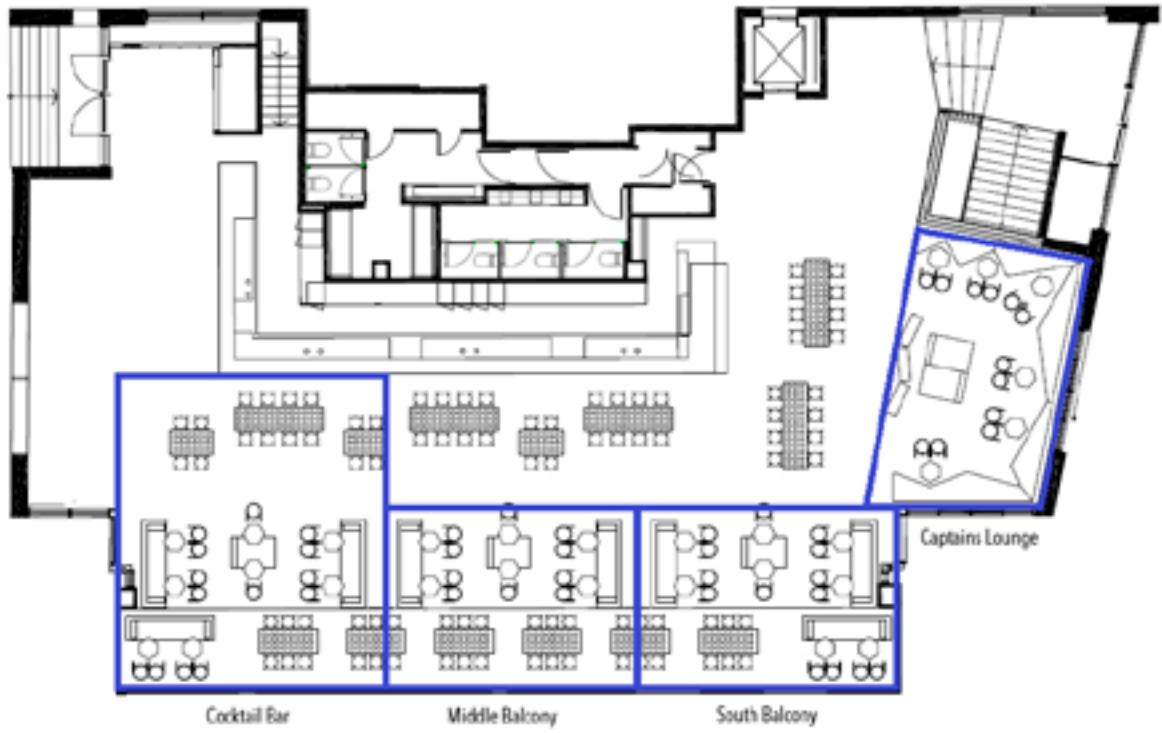
The Captain's lounge is a semi-private space for intimate events suited perfectly for cocktail style functions which also offers a relaxed atmosphere with plenty of lounges and gives you a great over view of the venue as well as a quick access to the bar.

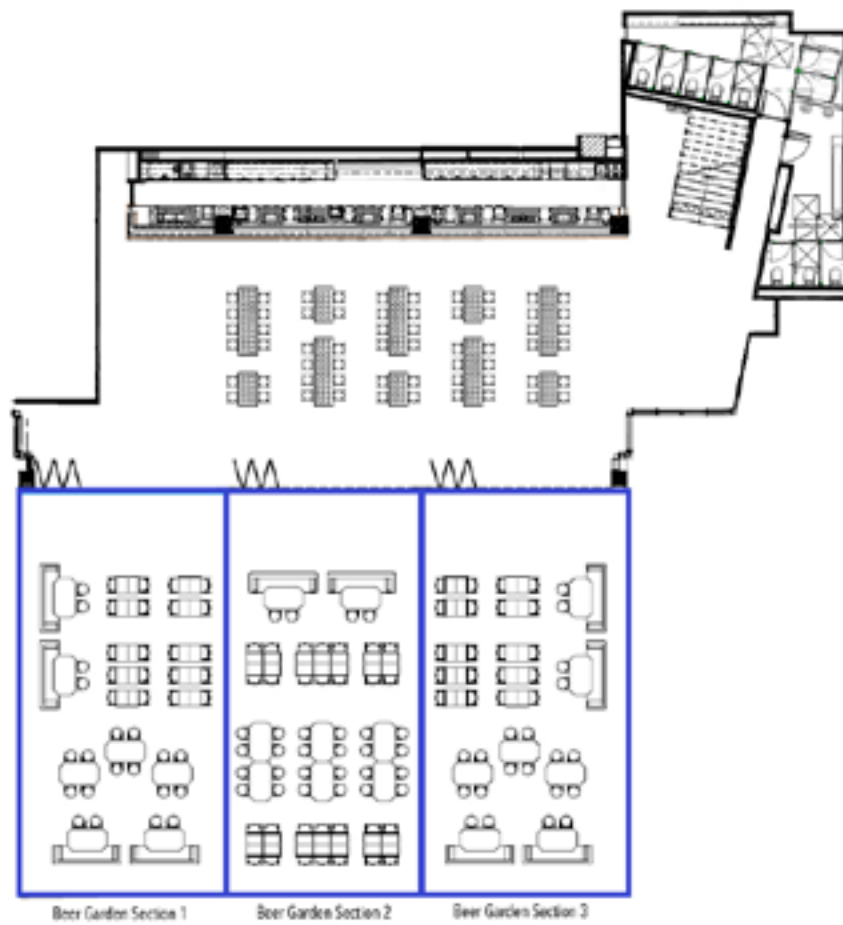


## UPSTAIRS EXCLUSIVE

Cocktail | Up to 400

This flexible space provides iconic uninterrupted views across Darling Harbour, this space could be years for your next event! Get the best of both areas! The large cocktail bar lights up as the night progresses, think purples & blues to set the scene. This sizable bar can be easily accessible from all areas of the room. Enable your guests the ability to roam freely and rest on our comfy couches or high-tops insides or outside with the seaside views.





# CANAPÉ PACKAGES

*A minimum order of 20 is required:*

7 Piece Package | \$35pp

*Selection of 3 cold, 4 hot options*

9 Piece Package | \$45pp

*Selection of 4 cold, 4 hot, 1 substantial*

11 Piece Package | \$55pp

*Selection of 4 cold, 4 hot, 2 substantial, 1 dessert*

## **COLD CANAPÉS**

Fresh shucked oyster, natural & pickled cucumber, dill and lemon (GF)

Edamame dip, sesame, rice cracker (VE, GF)

Bruschetta of bocconcini, cherry tomato salsa & basil (V)

Baby Beetroot, orange and goat cheese tart (V)

Frittata of zucchini, ricotta and mint (V)

Tostada, salmon, avocado and mango salsa (GF)

Smoked salmon, cream cheese, dill on sourdough

Prosciutto, melon, basil and extra virgin olive oil (GF)

## **HOT CANAPÉS**

Vegetarian spring rolls with sweet chilli sauce (V)

Crispy tempura coconut prawn, tomato chilli jam

Pumpkin & feta arancini ball, tomato jam (V, GF)

Mac and cheese balls, spiced tomato relish (V)

Sundried tomato, fetta and basil quiche (V)

Beef and red wine mini pie

Chicken, mushroom and leek pie

Beef sausage roll, tomato sauce

Chipotle and bean mini pie (VE)

## **SUBSTANTIALS**

Beer battered fish and chips, tartare sauce  
Wagyu beef slider, American cheddar, tomato Jam  
Fried Chicken slider, slaw, chipotle mayo  
Spiced cauliflower taco, guacamole, coriander salsa and lime (VE)  
Mini Salmon Poke Bowl

## **SOMETHING SWEET**

Donut fries with chocolate sauce  
Berry cheesecake  
Assorted bambino cones  
Raw caramel Slice (GF, DF, V)

*To add additional canapés to your package:*

Cold - \$ 5 per piece  
Hot - \$6 per piece  
Substantial - \$8 per piece  
Something Sweet - \$6 per piece



# PLATTERS

*All platters contain 30 pieces.*

Waygu beef slider, American cheddar, tomato jam | 190

Beef sausage roll with tomato sauce | 150

Fried chicken slider, slaws, chipotle mayo | 190

Pumpkin & fetta arancini balls, tomato jam (V, GF) | 150

Tandoori chicken skewers, cucumber rita | 150

Sun dried tomato, basil and fetta quiche (V) | 140





# BEVERAGE PACKAGES

*For a minimum of 20pax.*

## **STANDARD**

2 hours \$35pp | 3 hours \$45pp | 4 hours \$55pp

*Draught Beer* – Hahn Super Dry

*Bottled Beer* – James Boag's Premium Light

*Sparkling* – Edge of the World Sparkling

*White Wine* – Edge of the World Sauvignon Blanc

*Red Wine* – Edge of the World Shiraz Cabernet

*Non-Alcoholic* – Soft drinks & juices

## **PREMIUM**

2 hours \$45pp | 3 hours \$55pp | 4 hours \$65pp

*Draught Beer* – Hahn Super Dry, Furphy Refreshing Ale

*Bottled Beer* – Peroni, Great Northern Mid & James Boag's Premium Light

*Cider* – Orchard Crush Cider

*Sparkling* – Tempus Two Prosecco

*White Wine* – 821 South Sauvignon Blanc, The Primrose Path Chardonnay

*Red Wine* – Drake Shiraz, Altacena Tempranillo

*Rosé* – Edge of the World Rosé

*Non-Alcoholic* – Soft drinks & juices

## **DELUXE**

2 hours \$55pp | 3 hours \$65pp | 4 hours \$75pp

*Draught Beer* – All draught beer

*Bottled Beer* – Peroni, Asahi, Corona & James Boag's Premium Light

*Cider* – James Squire Orchard Crush Apple Cider

*Sparkling* – Madame Coco Brut NV

*White Wine* – 821 South Sauvignon Blanc, Tempus Two Pinot Gris & Road to Enlightenment Riesling

*Red Wine* – Guilty by Association Pinot Noir, Drake Shiraz

*Rosé* – St Huberts The Stag' Rosé

*Non-Alcoholic* – Soft drinks & juices



**ADD ARRIVAL COCKTAILS - \$10 PER COCKTAIL**

Treat your guests to a Seasonal Spritz, French Martini, Bellini or speak to your event coordinator for additional options.

**ADD ONS TO ANY BEVERAGE PACKAGE**

Rose - \$5 per person

Bottled Beer - \$5 per person

*All food and beverage menus are subject to seasonal change and availability.  
A maximum of 3 hour beverage package is available for hens and bucks groups.*

## **CONTACT US**

For any enquiries please contact our events team on 1800 836 837 or email [info@ausvenueco.com.au](mailto:info@ausvenueco.com.au)

## **LOCATION**

52-60 The Promenade, Sydney NSW 2000

Cargo Bar is in prime position on King Street Wharf, centrally located next to Barangaroo Ferry Wharf and Wynyard & Town Hall Train Stations a 3 minute walk away.

## **AUDIO VISUAL**

Any additional AV can be organised and approved with your event manager.

## **STYLING DÉCOR**

Your event manager is happy to assist with all your event styling needs. Please speak with them directly to obtain quotes for florals or any other additional touches for your event.

## **ENTERTAINMENT**

Bring the vibes to your exclusive event and let us organise your entertainment:

PHOTOBOOTHS - \$1,200 (4 hours)

DJ + Equipment - \$210/hr (min 3 hours)

Solo Act Rate - (3 hours) \$850 (3 hours)

Duo Act Rate - (3 hours) \$1,450 (3 hours)

Trio Act Rate - (3 hours) \$2,100 (3 hours)

## **HOST/SECURITY**

Should you require a door host or additional security at your event, we can arrange this for you at a charge of \$50 per host/guard per hour.

Cargo

52-60 The Promenade, Sydney NSW 2000

(02) 8322 2005

[info@cargobar.com.au](mailto:info@cargobar.com.au)

[cargobar.com.au](http://cargobar.com.au)



#cargobar

# **CARGO**

**Sydney  
Venue Co.**